

HCL Domino 12.0.1 : Installation Hot Fix et Fix pack

Pour arrêter, démarrer le serveur HCL Domino nous utilisons [les scripts de Daniel NASHED](#).

Les sources décompactées se trouvent dans le répertoire :

- /home/notes

Les installations se trouvent dans les répertoires :

- Programme Domino : /opt/hcl/domino
- Data Domino : /local/notesdata

```
[root@lgn-test-domino-lnx linux64]# cd /home/notes
[root@lgn-test-domino-lnx notes]# ll
total 8
-rw-r--r-- 1 root  root  1013 Nov 30 16:17 adm.json
drwxr-xr-x 3 root  root   21 Dec 10 15:50 Dominol2
drwxr-xr-x 3 root  root   21 Jan 11 10:07 Dominol201
drwxr-xr-x 3 root  root   21 Apr 14 09:15 Dominol201FP1
drwxr-xr-x 3 root  root   21 Jan 11 11:33 Dominol201HF14
drwxr-xr-x 3 root  root   21 Mar 11 14:49 Dominol201HF50
drwxr-xr-x 2 notes notes  48 Jan 11 10:34 javasharedresources
drwxr-xr-x 2 root  root  334 Apr 14 09:11 Sources
drwxr-xr-x 6 root  root 4096 Jan 11 16:42 start_script
drwxr-xr-x 2 root  root  121 Jan 25 11:12 Traveler12
drwxr-xr-x 2 root  root  109 Jan 25 11:37 Traveler1201
drwxr-xr-x 2 root  root  109 Jan 25 11:13 Traveler12FP1
[root@lgn-test-domino-lnx notes]#
```

Nous allons traiter plusieurs cas :

1. [Installation du HF14 à partir de HCL Domino 12.0.1](#)
2. [Installation du HF50 à partir de HCL Domino 12.0.1 HF14](#)
3. [Installation du FP1 à partir de HCL Domino 12.0.1 HF50](#)
4. [Installation du FP1 à partir de HCL Domino 12.0.1](#)

1 – Installation du HF14 à partir de HCL Domino 12.0.1

Avant de commencer l'installation, nous allons entrer dans le mode console, arrêter le serveur et sortir du mode console :

```
domino console  
QUIT  
close
```

Puis nous allons dans le répertoire où se trouvent les sources décompactées du HF14 puis nous lançons l'installation :

```
cd /home/notes/Domino1201HF14/linux64/  
./install
```

```
=====
                        Domino Server Incremental Installer
=====

Welcome to the HCL Domino Incremental Installer.

The HCL Domino Incremental Installer will update an existing
installation to a new revision.  All installation settings are
automatically set to be those of the last installation.

Type h for help on how to use this program.
Press TAB to begin the update.

-----

Type h for help
Type e to exit installation
Press TAB to continue to the next screen.
=====
```

Cliquer sur TAB.

```
=====
                        Domino Server Incremental Installer
=====

In order to proceed with the installation of the Domino Server,
you must read and agree with the terms and conditions of the
HCL Domino/Notes Software Agreement.

Press TAB to read the HCL Domino/Notes Software Agreement.

-----

Type e to exit the Install program.
Press ESC to return to the previous screen
Press TAB to continue to the next screen.
-----
```

Cliquer sur une touche.

```
Specifications

Program's specifications can be found in the collective Description and Technical
>>> Press any key to continue <<<█
```

Cliquer sur TAB.

```
Press the Escape key to go back to the previous screen
or
Press the Tab key to continue...
```

Cliquer sur TAB.

```
=====
                        Domino Server Incremental Installer
=====

You may proceed with the installation only if you agree to the
terms and conditions of the HCL Domino/Notes Software Agreement.

-----

Type e to exit the Install program.
Press ESC to return to the previous screen.
Press the Spacebar to change the setting until you get the one you want.
Press TAB to accept a setting and continue to the next screen.
-----

>>> Do you agree to the terms of the license agreement ? [Yes]█
```

Cliquer sur TAB.

```

=====
                        Domino Server Incremental Installer
=====
Installation settings:

    Program directory      : /opt/hcl/domino
    Data directory        : /local/notesdata
    UNIX user              : notes
    UNIX group             : notes

12000100 upgrade to 1201HF14

Type e or press ESC to exit the install program
or
Press the Tab key to perform the update...

```

Cliquer sur TAB.

```

WARNING:
The following system commands were not located:
    rsh
Installation to remote systems will not be possible.

Validating...

Not checking patches for linux.

Installing Domino Server kits ...
Replacing <NOTESPROGDIR>libndgts.so
Replacing <NOTESPROGDIR>libnotes.so.sym
Replacing <NOTESPROGDIR>libnotes.so
The installation completed successfully.

Please be sure to login as the appropriate UNIX user
before running Domino - Do not run as root.

[root@lgn-test-domino-lnx linux64]#

```

Nous allons vérifier que le HF14 soit bien installé sur le serveur HCL Domino, nous allons redémarrer le serveur :

```

sudo domino start live
show server

```

```

sh serv

[031587:000009-00007F7491EC8700] HCL Domino (r) Server (64 Bit) (Release 12.0.1HF14 for Linux/64) 04/20/2022 09:27:28 AM

[031587:000009-00007F7491EC8700] Server name:          DOMINO01A/DOMCNX - Domino Server - Verse
[031587:000009-00007F7491EC8700] Domain name:        DOMCNX

```

2 – Installation du HF50 à partir de HCL Domino 12.0.1 HF14

Avant de commencer l'installation, nous allons entrer dans le mode console, arrêter le serveur et sortir du mode console :

```
domino console
QUIT
close
```

Puis nous allons dans le répertoire où se trouvent les sources décompactées du HF50 puis nous lançons l'installation :

```
cd /home/notes/Domino1201HF50/linux64/
./install
```

```
=====
                        Domino Server Incremental Installer
=====

Welcome to the HCL Domino Incremental Installer.

The HCL Domino Incremental Installer will update an existing
installation to a new revision.  All installation settings are
automatically set to be those of the last installation.

Type h for help on how to use this program.
Press TAB to begin the update.

-----

Type h for help
Type e to exit installation
Press TAB to continue to the next screen.
-----
```

Cliquer sur TAB.

```
=====
                        Domino Server Incremental Installer
=====

In order to proceed with the installation of the Domino Server,
you must read and agree with the terms and conditions of the
HCL Domino/Notes Software Agreement.

Press TAB to read the HCL Domino/Notes Software Agreement.

-----

Type e to exit the Install program.
Press ESC to return to the previous screen
Press TAB to continue to the next screen.
-----
```

Cliquer sur TAB.

```
Specifications

Program's specifications can be found in the collective Description and Technical
>>> Press any key to continue <<< █
```

Cliquer sur une touche (une ou plusieurs fois).

```
Press the Escape key to go back to the previous screen
or
Press the Tab key to continue...
```

Cliquer sur TAB.

```
=====
                        Domino Server Incremental Installer
=====

You may proceed with the installation only if you agree to the
terms and conditions of the HCL Domino/Notes Software Agreement.

-----
Type e to exit the Install program.
Press ESC to return to the previous screen.
Press the Spacebar to change the setting until you get the one you want.
Press TAB to accept a setting and continue to the next screen.
-----

>>> Do you agree to the terms of the license agreement ? [Yes]
```

Cliquer sur TAB.

```
=====
                        Domino Server Incremental Installer
=====

This Incremental Installer can only be used with a properly installed
Domino installation.
Not valid Domino version was detected:
    1201HF14

-----
Type e to exit the Install program.
-----
```

Cliquer sur e pour sortir de l'installation. Pour installer le nouveau HF, il faut dans un premier temps désinstaller l'ancien HF.

Nous allons dans le répertoire où se trouvent les sources décompactées du HF14 puis nous lançons la désinstallation :

```
cd /home/notes/Domino1201HF14/linux64/
./install
```

```
=====
                        Domino Server Incremental Installer
=====

Welcome to the HCL Domino Incremental Installer.

The HCL Domino Incremental Installer will update an existing
installation to a new revision.  All installation settings are
automatically set to be those of the last installation.

Type h for help on how to use this program.
Press TAB to begin the update.

-----

Type h for help
Type e to exit installation
Press TAB to continue to the next screen.
=====
```

Cliquer sur TAB.

```
=====
                        Domino Server Incremental Installer
=====

In order to proceed with the installation of the Domino Server,
you must read and agree with the terms and conditions of the
HCL Domino/Notes Software Agreement.

Press TAB to read the HCL Domino/Notes Software Agreement.

-----

Type e to exit the Install program.
Press ESC to return to the previous screen
Press TAB to continue to the next screen.
=====
```

Cliquer sur TAB.

```
Specifications

Program's specifications can be found in the collective Description and Technical
>>> Press any key to continue <<<█
```

Cliquer sur une touche (une ou plusieurs fois).

```
Press the Escape key to go back to the previous screen
or
Press the Tab key to continue...
```

Cliquer sur TAB.

```

=====
                        Domino Server Incremental Installer
=====

You may proceed with the installation only if you agree to the
terms and conditions of the HCL Domino/Notes Software Agreement.

-----

Type e to exit the Install program.
Press ESC to return to the previous screen.
Press the Spacebar to change the setting until you get the one you want.
Press TAB to accept a setting and continue to the next screen.
-----

>>> Do you agree to the terms of the license agreement ?  [Yes]

```

Cliquer sur TAB.

```

=====
                        Domino Server Incremental Installer
=====

A valid Domino installation was detected:
1201HFl4

-----

Type h for help.
Type e to exit the Install program.
Press ESC to return to the previous screen.
Press the Spacebar to change the setting until you get the one you want.
Press TAB to accept a setting and continue to the next screen.
-----

>>> Select version to revert to : [12000100]

```

Cliquer sur TAB.

```

=====
                        Domino Server Incremental Installer
=====

Installation settings:

  Program directory      : /opt/hcl/domino
  Data directory         : /local/notesdata
  UNIX user              :  notes
  UNIX group             :  notes

1201HFl4 revert to 12000100

Type e or press ESC to exit the install program
or
Press the Tab key to perform the update...

```

Cliquer sur TAB.


```
WARNING:
The following system commands were not located:
  rsh
Installation to remote systems will not be possible.

Validating...

Not checking patches for linux.

Installing Domino Server kits ...
Replacing <NOTESPROGDIR>libndgts.so
Replacing <NOTESPROGDIR>libnotes.so.sym
Replacing <NOTESPROGDIR>libnotes.so
The installation completed successfully.

Please be sure to login as the appropriate UNIX user
before running Domino - Do not run as root.

[root@lgn-test-domino-lnx linux64]#
```

Nous allons vérifier que le HF14 soit bien désinstallé sur le serveur HCL Domino, nous allons redémarrer le serveur :

```
sudo domino start live
show server
```

```
sh serv
[001683:000009-00007F744F624700] HCL Domino (r) Server (64 Bit) (Release 12.0.1 for Linux/64) 04/20/2022 10:52:16 AM
[001683:000009-00007F744F624700] Server name:          DOMINO01A/DOMCNX - Domino Server - Verse
[001683:000009-00007F744F624700] Domain name:        DOMCNX
```

Avant de continuer l'installation, nous allons entrer dans le mode console, arrêter le serveur et sortir du mode console :

```
domino console
QUIT
close
```

Nous retournons dans le répertoire où se trouvent les sources décompactées du HF50 puis nous lançons l'installation :

```
cd /home/notes/Domino1201HF50/linux64/
./install
```

```
=====
                        Domino Server Incremental Installer
=====

Welcome to the HCL Domino Incremental Installer.

The HCL Domino Incremental Installer will update an existing
installation to a new revision. All installation settings are
automatically set to be those of the last installation.

Type h for help on how to use this program.
Press TAB to begin the update.

-----

Type h for help
Type e to exit installation
Press TAB to continue to the next screen.
=====
```

Cliquer sur TAB.

```
=====
                        Domino Server Incremental Installer
=====

In order to proceed with the installation of the Domino Server,
you must read and agree with the terms and conditions of the
HCL Domino/Notes Software Agreement.

Press TAB to read the HCL Domino/Notes Software Agreement.

-----

Type e to exit the Install program.
Press ESC to return to the previous screen
Press TAB to continue to the next screen.
=====
```

Cliquer sur TAB.

```
Specifications

Program's specifications can be found in the collective Description and Technical
>>> Press any key to continue <<< █
```

Cliquer sur une touche (une ou plusieurs fois).

```
Press the Escape key to go back to the previous screen
or
Press the Tab key to continue...
```

Cliquer sur TAB.

```

=====
Domino Server Incremental Installer
=====

You may proceed with the installation only if you agree to the
terms and conditions of the HCL Domino/Notes Software Agreement.

-----

Type e to exit the Install program.
Press ESC to return to the previous screen.
Press the Spacebar to change the setting until you get the one you want.
Press TAB to accept a setting and continue to the next screen.
-----

>>> Do you agree to the terms of the license agreement ? [Yes]

```

Cliquer sur TAB.

```

=====
Domino Server Incremental Installer
=====

Installation settings:

Program directory      : /opt/hcl/domino
Data directory         : /local/notesdata
  UNIX user            :  notes
  UNIX group           :  notes

12000100 upgrade to 1201HF50

Type e or press ESC to exit the install program
or
Press the Tab key to perform the update...

```

Cliquer sur TAB.

```

WARNING:
The following system commands were not located:
  rsh
Installation to remote systems will not be possible.

Validating...

Not checking patches for linux.

Installing Domino Server kits ...
Replacing <NOTESPROGDIR>libndgts.so
Replacing <NOTESPROGDIR>libnotes.so.sym
Replacing <NOTESPROGDIR>libnotes.so
The installation completed successfully.

Please be sure to login as the appropriate UNIX user
before running Domino - Do not run as root.

[root@lgn-test-domino-lnx linux64]#

```

Nous allons vérifier que le HF50 soit bien installé sur le serveur HCL Domino, nous allons redémarrer le serveur :

```
sudo domino start live  
show server
```

```
sh serv  
[014080:000009-00007F197A1C8700] HCL Domino (r) Server (64 Bit) (Release 12.0.1HF50 for Linux/64) 20/04/2022 14:28:57  
[014080:000009-00007F197A1C8700] Server name: DOMINO01B/DOMCNX - Domino Server - Verse  
[014080:000009-00007F197A1C8700] Domain name: DOMCNX
```

3 – Installation du FP1 à partir de HCL Domino 12.0.1 HF50

Avant de commencer l'installation, nous allons entrer dans le mode console, arrêter le serveur et sortir du mode console :

```
domino console  
QUIT  
close
```

Puis nous allons dans le répertoire où se trouvent les sources décompactées du FP1 puis nous lançons l'installation :

```
cd /home/notes/Domino1201FP1/linux64/domino  
./install
```

```
=====
                        Domino Server Incremental Installer
=====

Welcome to the HCL Domino Incremental Installer.

The HCL Domino Incremental Installer will update an existing
installation to a new revision. All installation settings are
automatically set to be those of the last installation.

Type h for help on how to use this program.
Press TAB to begin the update.

-----

Type h for help
Type e to exit installation
Press TAB to continue to the next screen.
=====
```

Cliquer sur TAB.

```
=====
                        Domino Server Incremental Installer
=====

In order to proceed with the installation of the Domino Server,
you must read and agree with the terms and conditions of the
HCL Domino/Notes Software Agreement.

Press TAB to read the HCL Domino/Notes Software Agreement.

-----

Type e to exit the Install program.
Press ESC to return to the previous screen
Press TAB to continue to the next screen.
-----
```

Cliquer sur une touche.

```
Specifications

Program's specifications can be found in the collective Description and Technical
>>> Press any key to continue <<<█
```

Cliquer sur TAB.

```
Press the Escape key to go back to the previous screen
or
Press the Tab key to continue...
```

Cliquer sur TAB.

```
=====
                        Domino Server Incremental Installer
=====

You may proceed with the installation only if you agree to the
terms and conditions of the HCL Domino/Notes Software Agreement.

-----

Type e to exit the Install program.
Press ESC to return to the previous screen.
Press the Spacebar to change the setting until you get the one you want.
Press TAB to accept a setting and continue to the next screen.
-----

>>> Do you agree to the terms of the license agreement ? [Yes]█
```

Cliquer sur TAB.

```
=====
Domino Server Incremental Installer
=====

This Incremental Installer can only be used with a properly installed
Domino installation.
Not valid Domino version was detected:
    1201HF50

Type e to exit the Install program.
=====
```

Cliquer sur e pour sortir de l'installation. Pour installer le FP, il faut dans un premier temps désinstaller le HF.

Nous allons dans le répertoire où se trouvent les sources décompactées du HF50 puis nous lançons la désinstallation :

```
cd /home/notes/Domino1201HF50/linux64/
./install
```

```
=====
Domino Server Incremental Installer
=====

Welcome to the HCL Domino Incremental Installer.

The HCL Domino Incremental Installer will update an existing
installation to a new revision. All installation settings are
automatically set to be those of the last installation.

Type h for help on how to use this program.
Press TAB to begin the update.

Type h for help
Type e to exit installation
Press TAB to continue to the next screen.
=====
```

Cliquer sur TAB.

```
=====
                        Domino Server Incremental Installer
=====

In order to proceed with the installation of the Domino Server,
you must read and agree with the terms and conditions of the
HCL Domino/Notes Software Agreement.

Press TAB to read the HCL Domino/Notes Software Agreement.

-----

Type e to exit the Install program.
Press ESC to return to the previous screen
Press TAB to continue to the next screen.
-----
```

Cliquer sur TAB.

```
Specifications

Program's specifications can be found in the collective Description and Technical
>>> Press any key to continue <<<█
```

Cliquer sur une touche (une ou plusieurs fois).

```
Press the Escape key to go back to the previous screen
or
Press the Tab key to continue...
```

Cliquer sur TAB.

```
=====
                        Domino Server Incremental Installer
=====

You may proceed with the installation only if you agree to the
terms and conditions of the HCL Domino/Notes Software Agreement.

-----

Type e to exit the Install program.
Press ESC to return to the previous screen.
Press the Spacebar to change the setting until you get the one you want.
Press TAB to accept a setting and continue to the next screen.
-----

>>> Do you agree to the terms of the license agreement ? [Yes]█
```

Cliquer sur TAB.

```

=====
Domino Server Incremental Installer
=====

A valid Domino installation was detected:
1201HF50

-----

Type h for help.
Type e to exit the Install program.
Press ESC to return to the previous screen.
Press the Spacebar to change the setting until you get the one you want.
Press TAB to accept a setting and continue to the next screen.
-----

>>> Select version to revert to : [12000100]

```

Cliquer sur TAB.

```

=====
Domino Server Incremental Installer
=====

Installation settings:

Program directory      : /opt/hcl/domino
Data directory         : /local/notesdata
  UNIX user            :  notes
  UNIX group           :  notes

1201HF50 revert to 12000100

Type e or press ESC to exit the install program
or
Press the Tab key to perform the update...

```

Cliquer sur TAB.

```

WARNING:
The following system commands were not located:
  rsh
Installation to remote systems will not be possible.

Validating...

Not checking patches for linux.

Installing Domino Server kits ...
Replacing <NOTESPROGDIR>libndgts.so
Replacing <NOTESPROGDIR>libnotes.so.sym
Replacing <NOTESPROGDIR>libnotes.so
The installation completed successfully.

Please be sure to login as the appropriate UNIX user
before running Domino - Do not run as root.

[root@lgn-test-domino-lnx linux64]#

```

Nous allons vérifier que le HF50 soit bien désinstallé sur le

serveur HCL Domino, nous allons redémarrer le serveur :

```
sudo domino start live  
show server
```

```
sh serv  
[001683:000009-00007F744F624700] HCL Domino (r) Server (64 Bit) (Release 12.0.1 for Linux/64) 04/20/2022 10:52:16 AM  
[001683:000009-00007F744F624700] Server name:          DOMINO01A/DOMCNX - Domino Server - Verse  
[001683:000009-00007F744F624700] Domain name:        DOMCNX
```

Avant de continuer l'installation, nous allons entrer dans le mode console, arrêter le serveur et sortir du mode console :

```
domino console  
QUIT  
close
```

Puis nous allons dans le répertoire où se trouvent les sources décompactées du FP1 puis nous lançons l'installation :

```
cd /home/notes/Domino1201FP1/linux64/domino  
./install
```

```
=====
                          Domino Server Incremental Installer
=====

Welcome to the HCL Domino Incremental Installer.

The HCL Domino Incremental Installer will update an existing
installation to a new revision.  All installation settings are
automatically set to be those of the last installation.

Type h for help on how to use this program.
Press TAB to begin the update.

-----
Type h for help
Type e to exit installation
Press TAB to continue to the next screen.
-----
```

Cliquer sur TAB.

```
=====
                        Domino Server Incremental Installer
=====

In order to proceed with the installation of the Domino Server,
you must read and agree with the terms and conditions of the
HCL Domino/Notes Software Agreement.

Press TAB to read the HCL Domino/Notes Software Agreement.

-----

Type e to exit the Install program.
Press ESC to return to the previous screen
Press TAB to continue to the next screen.
-----
```

Cliquer sur une touche.

```
Specifications

Program's specifications can be found in the collective Description and Technical
>>> Press any key to continue <<<█
```

Cliquer sur TAB.

```
Press the Escape key to go back to the previous screen
or
Press the Tab key to continue...
```

Cliquer sur TAB.

```
=====
                        Domino Server Incremental Installer
=====

You may proceed with the installation only if you agree to the
terms and conditions of the HCL Domino/Notes Software Agreement.

-----

Type e to exit the Install program.
Press ESC to return to the previous screen.
Press the Spacebar to change the setting until you get the one you want.
Press TAB to accept a setting and continue to the next screen.
-----

>>> Do you agree to the terms of the license agreement ? [Yes]█
```

Cliquer sur TAB.

```
=====
                        Domino Server Incremental Installer
=====
```

Installation settings:

```
Program directory      : /opt/hcl/domino
Data directory         : /local/notesdata
  UNIX user            :  notes
  UNIX group           :  notes
```

12000100 upgrade to 1201FP1

Type e or press ESC to exit the install program
or
Press the Tab key to perform the update...

Cliquer sur TAB.

```
WARNING:
The following system commands were not located:
  rsh
Installation to remote systems will not be possible.
```

Validating...

Not checking patches for linux.

Installing Domino Server kits ...

```
Replacing <NOTESPROGDIR>libsslplus.so
Replacing <NOTESPROGDIR>daosmgr
Replacing <NOTESPROGDIR>updall
Replacing <NOTESPROGDIR>update
Replacing <NOTESPROGDIR>adminp
Replacing <NOTESPROGDIR>dconsole.jar
Replacing <NOTESPROGDIR>notices.txt
Replacing <NOTESPROGDIR>libcrypto-domino.so.1.1
Replacing <NOTESPROGDIR>tika-server.jar
Replacing <NOTESPROGDIR>libjnotes.so
Replacing <NOTESDATADIR>dconsole.jar
Replacing <NOTESDATADIR>comparedbs.ntf
Replacing <NOTESPROGDIR>log4jTika.xml
Replacing <NOTESPROGDIR>libhttpstack.so
Replacing <NOTESPROGDIR>memcheck
Replacing <NOTESPROGDIR>libndgts.so
Replacing <NOTESDATADIR>Forms9.nsf
Replacing <NOTESPROGDIR>dirsnc
Replacing <NOTESPROGDIR>libnotes.so
Replacing <NOTESPROGDIR>libinotes.so
Replacing <NOTESPROGDIR>router
Replacing <NOTESPROGDIR>libtlupdat.so
Replacing <NOTESPROGDIR>liblsxbe.so
Replacing <NOTESPROGDIR>libprobes.so
Replacing <NOTESPROGDIR>nsd.sh
Replacing <NOTESDATADIR>dwabho.dll
Replacing <NOTESDATADIR>dwa9W.cab
Replacing <NOTESPROGDIR>event
The installation completed successfully.
```

Please be sure to login as the appropriate UNIX user
before running Domino - Do not run as root.

```
[root@lgn-test-domino-lnx domino]#
```

Nous allons vérifier que le FP1 soit bien installé sur le

serveur HCL Domino, nous allons redémarrer le serveur :

```
sudo domino start live  
show server
```

```
sh serv  
[018616:000009-00007F838C0C8700] HCL Domino (r) Server (64 Bit) (Release 12.0.1FP1 for Linux/64) 04/20/2022 02:21:20 PM  
[018616:000009-00007F838C0C8700] Server name:          DOMINO01A/DOMCNX - Domino Server - Verse  
[018616:000009-00007F838C0C8700] Domain name:         DOMCNX
```

4 – Installation du HF50 à partir de HCL Domino 12.0.1

Avant de commencer l'installation, nous allons entrer dans le mode console, arrêter le serveur et sortir du mode console :

```
domino console  
QUIT  
close
```

Puis nous allons dans le répertoire où se trouvent les sources décompactées du FP1 puis nous lançons l'installation :

```
cd /home/notes/Domino1201FP1/linux64/domino  
./install
```

```
=====
                        Domino Server Incremental Installer
=====

Welcome to the HCL Domino Incremental Installer.

The HCL Domino Incremental Installer will update an existing
installation to a new revision.  All installation settings are
automatically set to be those of the last installation.

Type h for help on how to use this program.
Press TAB to begin the update.

-----
Type h for help
Type e to exit installation
Press TAB to continue to the next screen.
=====
```

Cliquer sur TAB.

```
=====
                        Domino Server Incremental Installer
=====

In order to proceed with the installation of the Domino Server,
you must read and agree with the terms and conditions of the
HCL Domino/Notes Software Agreement.

Press TAB to read the HCL Domino/Notes Software Agreement.

-----

Type e to exit the Install program.
Press ESC to return to the previous screen
Press TAB to continue to the next screen.
-----
```

Cliquer sur une touche.

```
Specifications

Program's specifications can be found in the collective Description and Technical
>>> Press any key to continue <<<█
```

Cliquer sur TAB.

```
Press the Escape key to go back to the previous screen
or
Press the Tab key to continue...
```

Cliquer sur TAB.

```
=====
                        Domino Server Incremental Installer
=====

You may proceed with the installation only if you agree to the
terms and conditions of the HCL Domino/Notes Software Agreement.

-----

Type e to exit the Install program.
Press ESC to return to the previous screen.
Press the Spacebar to change the setting until you get the one you want.
Press TAB to accept a setting and continue to the next screen.
-----

>>> Do you agree to the terms of the license agreement ? [Yes]█
```

Cliquer sur TAB.

```
=====
                          Domino Server Incremental Installer
=====
```

Installation settings:

```
Program directory      : /opt/hcl/domino
Data directory         : /local/notesdata
  UNIX user            : notes
  UNIX group           : notes
```

12000100 upgrade to 1201FP1

Type e or press ESC to exit the install program
or
Press the Tab key to perform the update...

Cliquer sur TAB.

WARNING:

The following system commands were not located:
rsh

Installation to remote systems will not be possible.

Validating...

Not checking patches for linux.

Installing Domino Server kits ...

```
Replacing <NOTESPROGDIR>libsslplus.so
Replacing <NOTESPROGDIR>daosmgr
Replacing <NOTESPROGDIR>updall
Replacing <NOTESPROGDIR>update
Replacing <NOTESPROGDIR>adminp
Replacing <NOTESPROGDIR>dconsole.jar
Replacing <NOTESPROGDIR>notices.txt
Replacing <NOTESPROGDIR>libcrypto-domino.so.1.1
Replacing <NOTESPROGDIR>tika-server.jar
Replacing <NOTESPROGDIR>libjnotes.so
Replacing <NOTESDATADIR>dconsole.jar
Replacing <NOTESDATADIR>comparedbs.ntf
Replacing <NOTESPROGDIR>log4jTika.xml
Replacing <NOTESPROGDIR>libhttpstack.so
Replacing <NOTESPROGDIR>memcheck
Replacing <NOTESPROGDIR>libndgts.so
Replacing <NOTESDATADIR>Forms9.nsf
Replacing <NOTESPROGDIR>dirsnc
Replacing <NOTESPROGDIR>libnotes.so
Replacing <NOTESPROGDIR>libinotes.so
Replacing <NOTESPROGDIR>router
Replacing <NOTESPROGDIR>libtlupdat.so
Replacing <NOTESPROGDIR>liblsxbe.so
Replacing <NOTESPROGDIR>libprobes.so
Replacing <NOTESPROGDIR>nsd.sh
Replacing <NOTESDATADIR>dwabho.dll
Replacing <NOTESDATADIR>dwa9W.cab
Replacing <NOTESPROGDIR>event
The installation completed successfully.
```

Please be sure to login as the appropriate UNIX user
before running Domino - Do not run as root.

```
[root@lgn-test-domino-lnx domino]#
```

Nous allons vérifier que le FP1 soit bien installé sur le

serveur HCL Domino, nous allons redémarrer le serveur :

```
sudo domino start live  
show server
```

```
sh serv  
[018616:000009-00007F838C0C8700] HCL Domino (r) Server (64 Bit) (Release 12.0.1FP1 for Linux/64) 04/20/2022 02:21:20 PM  
[018616:000009-00007F838C0C8700] Server name:          DOMINO01A/DOMCNX - Domino Server - Verse  
[018616:000009-00007F838C0C8700] Domain name:         DOMCNX
```

Configuration de Rocky Linux 9.x pour Domino 12 – Domino 14

Prérequis Linux :

[Rocky Linux 9.x](#)

Mise à jour du système :

```
dnf check-update  
dnf update
```

Installation de « epel-release » :

```
dnf install epel-release
```

Installation de vim (vi amélioré), unzip, wget et net-tools :

```
dnf install vim unzip wget bind-utils net-tools tar sysstat  
ncdu policycoreutils-python-utils
```

Mise à jour du hostname :

```
vim /etc/hostname
```

Mise à jour du fichier hosts :

```
vim /etc/hosts
```

Pour Domino 12

Mise à jour SELINUX

- SELINUX=disabled

```
vim /etc/sysconfig/selinux
```

```
# This file controls the state of SELinux on the system.
# SELINUX= can take one of these three values:
#   enforcing - SELinux security policy is enforced.
#   permissive - SELinux prints warnings instead of enforcing.
#   disabled - No SELinux policy is loaded.
SELINUX=disabled
# SELINUXTYPE= can take one of these three values:
#   targeted - Targeted processes are protected,
#   minimum - Modification of targeted policy. Only selected processes are protected.
#   mls - Multi Level Security protection.
SELINUXTYPE=targeted
```

puis taper la commande

```
setenforce 0
```

Pour configurer l'heure à celle de Paris :

```
timedatectl set-timezone Europe/Paris
```


Prérequis Domino:

Pour Domino 12

Installation de perl et librairie pour snmp :

```
dnf install perl glibc.i686 gdb
```

Pour Domino 14

Installation de perl et librairie pour snmp :

```
dnf install gdb perl-libs
```

Ajout de l'utilisateur « notes » et du groupe « notes »

```
useradd notes -U -m
```

Pour Domino 12

Ajout du paramètre « DOMINO_LINUX_SET_PARMS »

```
export DOMINO_LINUX_SET_PARMS=1  
echo -e "\nexport DOMINO_LINUX_SET_PARMS=1" >>  
/home/notes/.bashrc
```

```
vim /home/notes/.bashrc
```

Security limits

Mettre à jour le fichier Security/limits en ajoutant ou modifiant les deux lignes suivantes :

- notes soft nfile 80000
- notes hard nfile 80000

```
vim /etc/security/limits.conf
```

Mise à jour du firewall

```
firewall-cmd --zone=public --permanent --add-service=http
firewall-cmd --zone=public --permanent --add-service=https
firewall-cmd --zone=public --permanent --add-service=ldap
firewall-cmd --zone=public --permanent --add-service=ldaps
firewall-cmd --zone=public --permanent --add-service=smtp
firewall-cmd --zone=public --permanent --add-service=smtps
firewall-cmd --zone=public --permanent --add-port 1352/tcp
firewall-cmd --zone=public --permanent --add-port 2050/tcp
firewall-cmd --zone=public --permanent --add-port 8585/tcp
firewall-cmd --reload
firewall-cmd --list-all
```

Vous pouvez ajouter ou supprimer des services et ports au niveau du firewall selon votre architecture Domino.

HCL Domino 12 : Configuration du service Domino

Comment modifier le démarrage d'un serveur Domino? Telle était mon interrogation quand j'ai lancé mon serveur Domino sans sélectionner le mode de démarrage suivant : Démarrage en tant que service Windows.

On pourrait envisager de refaire l'installation du serveur Domino mais il y a une autre solution, beaucoup plus simple et plus rapide. Comme pour HCL Connections, il existe un exécutable qui permet de créer le service Windows.

Il est présent au moins depuis la version 8.x de Domino. Ce fichier se trouve dans le répertoire Domino_Program :

ntsvinst.exe

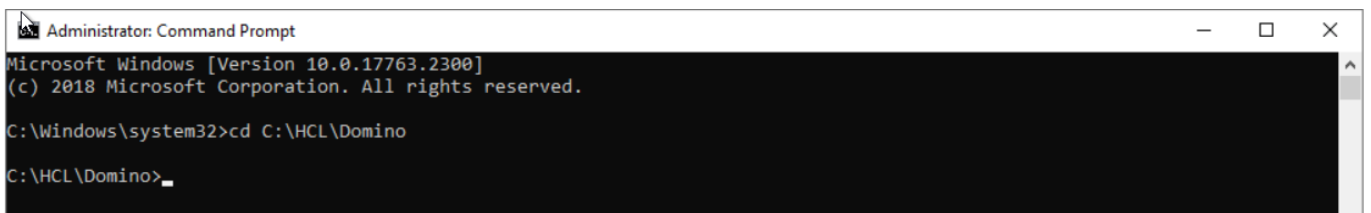
Dans notre cas le répertoire Domino_Program sera :

C:\HCL\Domino

Voici les paramètres :

- **-c** : crée le service Domino
- **-d** : supprime le service Domino
- **-t"Nom du service"** : définit le nom du service Domino »
- **-i"Chemindunotes.ini"** : définit le chemin complet du fichier notes.ini

Pour utiliser cette commande, ouvrez une fenêtre de commande en mode administrateur, se déplacer dans le répertoire **C:\HCL\Domino** :



```
Administrator: Command Prompt
Microsoft Windows [Version 10.0.17763.2300]
(c) 2018 Microsoft Corporation. All rights reserved.

C:\Windows\system32>cd C:\HCL\Domino

C:\HCL\Domino>
```

Pour créer le service Domino, taper la commande :

ntsvinst.exe -c -t"Nom du service" -i"Chemindunotes.ini"

Dans notre cas :

ntsvinst.exe -c -t"HCL Domino Server" -i"C:\HCL\Domino\notes.ini"

Pour supprimer le service Domino, taper la commande :

ntsvinst.exe -d -t"Nom du service"

Dans notre cas :

ntsvinst.exe -d -t"HCL Domino Server"

HCL Domino 12 – ODS 55

Structure ODS (On-Disk Structure) de Domino

La sortie de HCL Domino 12 a introduit une nouvelle version ODS (On Disk Structure) pour les bases de données. Cette nouvelle version est nommée ODS 55. Cette structure représente le format de fichier d'une base de données, en l'occurrence la structure de la base NSF(1).

Chaque nouvelle version de HCL Domino peut proposer une nouvelle version qui s'accompagne d'améliorations spécifiques à ces bases de données non accessibles avec les anciennes versions ODS.

Voici le tableau qui indique la versions ODS par défaut, la nouvelle version ODS et le paramètre à activer dans le fichier notes.ini à partir de HCL Domino 9.

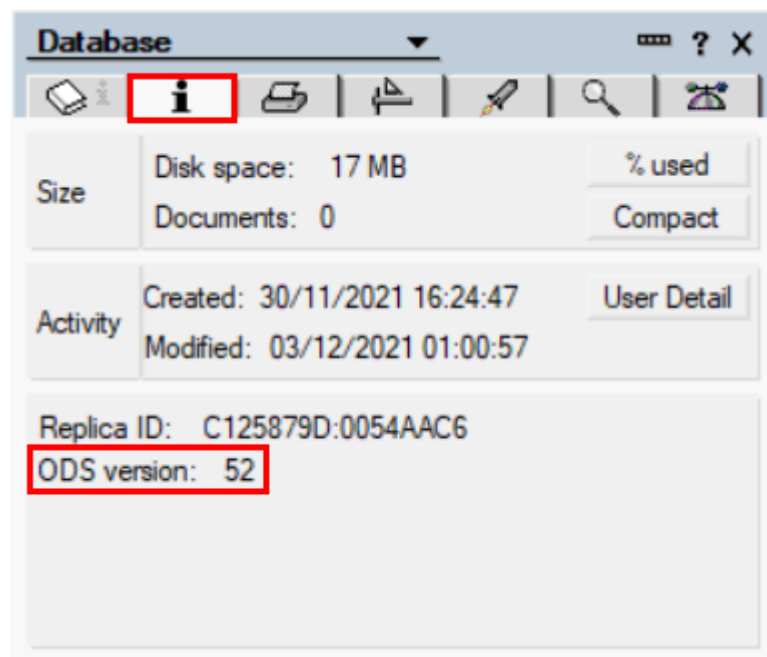
| Edition Notes/Domino | Système ODS par défaut | Nouveau système ODS | Paramètre notes.ini à ajouter |
|----------------------|------------------------|---------------------|-------------------------------|
| 9 | 43 | 52 | Create_R9_Databases=1 |
| 10 | 52 | 53 | Create_R10_Databases=1 |
| 11 | 52 | Aucun | Non applicable |
| 12 | 52 | 55 | Create_R12_Databases=1 |

Comme nous pouvons le voir dans ce tableau, si on n'utilise pas de paramètre **Create_Rx_Databases=1**, les bases NSF sont créées avec la version ODS par défaut. Elles peuvent être mises à niveau en les compactant à l'aide d'une optimisation

par copie.

```
load compact -c base.nsf
```

Nous pouvons visualiser la version ODS d'une base nsf en cliquant sur l'onglet i de la boîte des propriétés de la base.



Nous pouvons aussi afficher les versions ODS de plusieurs bases dans la colonne Format de l'onglet Fichier du client d'administration Domino.

| People & Groups Files Server... Messaging... Replication Configuration | | | | |
|---|---------------------------|------------------|------------------------|-------------|
| Server: DOMINO01A/DOMCNX Release 12.0 on Linux 3.10.0-1160.45.1.el7.x86_64 #1 SMP Wed Oct 13 | | | | |
| /local/notesdata aut etc gtrhome help iNotes IBM_CredStore mail nsd.notes panagenda Properties meval W32 xmlschemas xsp Catalog (12) | | | | |
| | Title | Filename | Physical Path | File Format |
| | Administration Request | admin4.nsf | /local/notesdata/adm | R12 (55:0) |
| | Java AgentRunner | agentrunner.nsf | /local/notesdata/Ager | R5 (41:0) |
| | Local free time info | busytime.nsf | /local/notesdata/busy | R12 (55:0) |
| | Catalog (12) | catalog.nsf | /local/notesdata/catal | R12 (55:0) |
| | DOMCNX's Certification | certlog.nsf | /local/notesdata/certl | R9 (52:0) |
| | CPP FreeBusy WebServ | cppfbws.nsf | /local/notesdata/cppfb | R9 (52:0) |
| | cppfbws | cppfbws.ntf | /local/notesdata/cppfb | R6 (43:0) |
| | daosnap | daosnap.ntf | /local/notesdata/DAO | R10 (53:0) |
| | Domino Domain Monitc | ddm.nsf | /local/notesdata/ddm | R12 (55:0) |
| | Entitlement Tracking (12) | entitlements.nsf | /local/notesdata/entit | R12 (55:0) |
| | Monitoring Configuratio | events4.nsf | /local/notesdata/ever | R12 (55:0) |
| | Homepage (11.0) | homepage.nsf | /local/notesdata/hom | R9 (52:0) |
| | HCL Notes/Domino Fau | Indfr.nsf | /local/notesdata/Indfr | R9 (52:0) |
| | HCL Notes/Domino Sm | Indsutr.nsf | /local/notesdata/Inds | R9 (52:0) |
| | Notes Log (12) () | log.nsf | /local/notesdata/log.r | R9 (52:0) |
| | DOMCNX's Directory | names.nsf | /local/notesdata/nam | R9 (52:0) |
| | Sample Web Agent - Re | pwdresetsampl | /local/notesdata/Pwd | R6 (43:0) |
| | Reports for DOMINO01A | reports.nsf | /local/notesdata/repo | R9 (52:0) |
| | Domino LDAP Schema | schema.nsf | /local/notesdata/sche | R12 (55:0) |
| | DOMINO01A Stats/DOM | statmail.nsf | /local/notesdata/statr | R12 (55:0) |
| | Monitoring Results | statrep.nsf | /local/notesdata/statr | R12 (55:0) |

Améliorations introduites avec la structure ODS 55 dans Domino 12

Cette nouvelle structure apporte trois nouvelles améliorations :

Pour ces améliorations, il faut que la structure ODS soit en 55.

- **Augmentation des entrées LCA.**

Passage de 950 à 65535. Pour bénéficier de cette augmentation, il suffit d'ajouter dans le notes.ini des serveurs et clients la valeur suivante :

```
NSF_ENABLE_LARGE_ACL=1
```

Pour revenir en arrière, supprimer suffisamment d'entrées LCA pour revenir à une taille de 32 Ko puis lancer la commande **compact -r**

- **Augmentation de la taille des champs de type *summary*.**
Elle passe de 64 Ko à 16 Mo. Pour activer cette fonctionnalité, taper la commande suivante :

`load compact -c -LargeSummary on base.nsf`
- **Augmentation de la taille des champs de type *non-summary*.**
Chaque champs peut avoir une taille maximum de 1 Go avec un document maximum de 4 Go

1 – NSF : Notes Storage Facility est le nom du format des bases de données pris en charge par HCL Notes/Domino.